



CROQUET COURT

I-20 DESIGN

Hunter Industries
1940 Diamond Street
San Marcos, California 92078
SpecPro Technical Assistance
1-800-319-4796
www.HunterIndustries.com

SHEET

1 OF 1

IRRIGATION LEGEND

PRODUCT DESCRIPTION

- HUNTER I-20-36S-XX/I-20-6P-36S-XX NOZZLE AS SHOWN
- HUNTER I-20-ADS-XX/I-20-6P-ADS-XX NOZZLE AS SHOWN

NOZZLE PERFORMANCE:

#3.5 @ 40 PSI - 3.0 GPM 38" RADIUS
#8 @ 40 PSI - 6.0 GPM 41" RADIUS

- ⊕ HUNTER ICV/IBV ELECTRIC CONTROL VALVE SIZE AS SHOWN
- ⚙ HUNTER HQ-44-XX-AW QUICK COUPLER VALVE (OPTIONAL)
- ⚠ HUNTER IC-600 SOLID STATE METAL CABINET CONTROLLER
- RS HUNTER SOLAR-SYNC-SEN ON SITE WEATHER SENSOR
- M WATER METER MINIMUM SIZE @ 18 GPM IS 1"
- BP BACKFLOW PREVENTER SIZED TO SYSTEM GPM

- MAINLINE PIPE
- LATERAL PIPE
- = SLEEVING
- ⊗ ISOLATION VALVE LINE SIZED
- HFS HUNTER FLOW SENSOR IN LINE SIZED FLOW CLK TEE "FCT"

IRRIGATION NOTES

- SPRINKLER LOCATIONS ARE TO SCALE
- PIPE LOCATIONS ARE DIAGRAMMATIC
- ALL SPRINKLERS TO BE INSTALLED ON .75" SCH 80 SWING JOINTS
- ALL COMPONENTS TO BE INSTALLED AS PER MANUFACTURERS RECOMMENDATIONS
- MAINLINE DEPTH TO BE NO LESS THAN 18"
- LATERAL DEPTH TO BE NO LESS THAN 16"
- ELECTRIC CONTROL VALVES TO BE COVERED WITH 12" VALVE BOX
- LOCATE VALVES/QCV'S OUT OF HIGH TRAFFIC AREAS
- WIRE SPLICE CONNECTIONS TO BE WATERPROOF
- QCV TO BE LOCATED IN 10" VALVE BOX
- ALL SLEEVES TO BE 2X PIPE RUN THROUGH THEM
- INSTALL ALL COMPONENTS AS PER LOCAL, STATE, FEDERAL CODES
- REFER TO HUNTER INSTALLATION DETAILS
- REFER TO HUNTER CATALOG FOR PERFORMANCE SPECIFICATIONS
- ADD HUNTER "FS" FOR DIRTY WATER VALVE
- ADD HUNTER "AS" FOR PRESSURE REGULATED VALVE

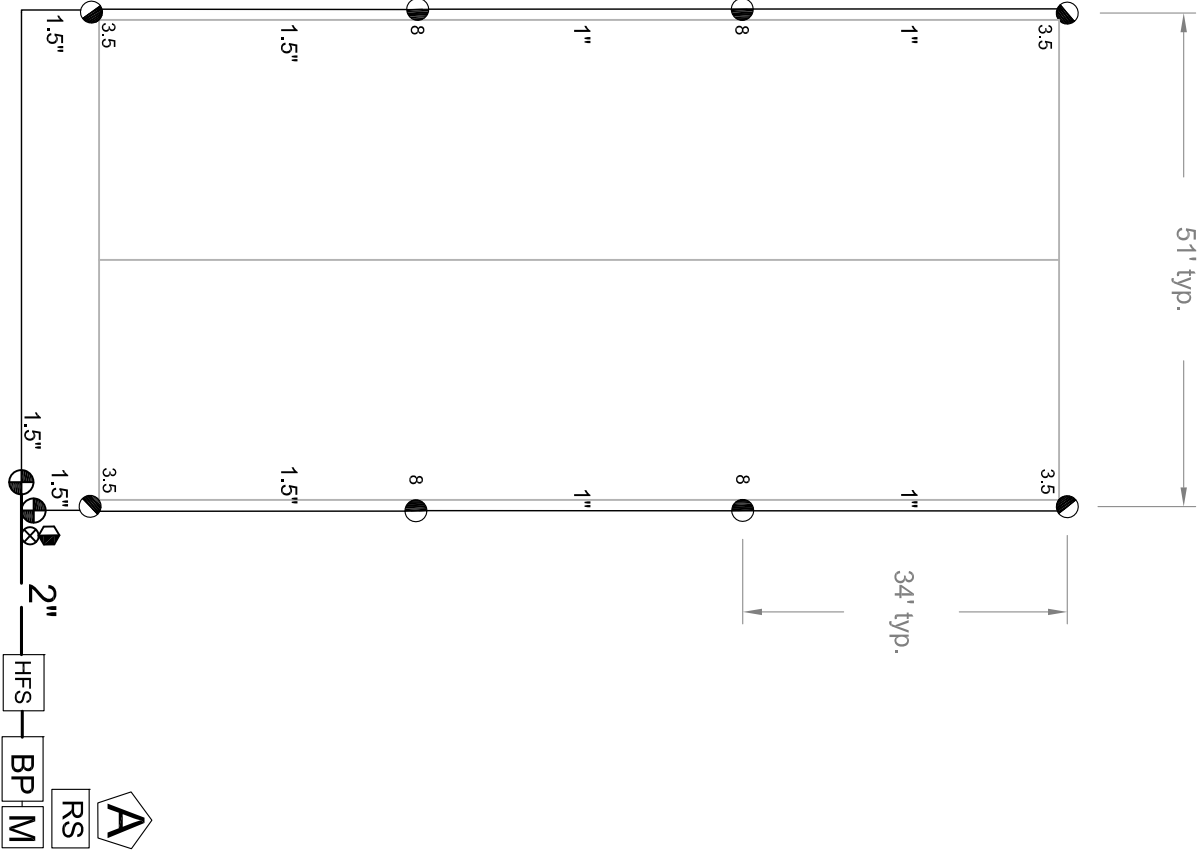
WATER REQUIREMENT

SYSTEM PERFORMANCE DATA

-AT FIELD ELEVATION	ZONE	SIZE	FLOW	PR	DU	SC (15% WINDOW)
-WITHIN 100' OF FIELD	A1	1"	18	.69"	.81	1.2
-DOWNSTREAM OF BACKFLOW IS	A2	1"	18	.69"	.81	1.2
18 GPM @ 45 PSI						

VALVE ID GUIDE

A1	STATION NUMBER
55	GPM
1.5"	VALVE SIZE
.50"/hr	PRECIPITATION RATE



SCALE: 1" = 20'0"